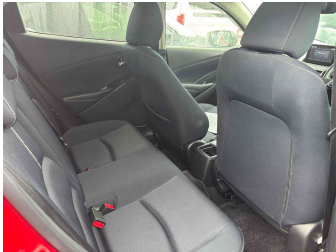
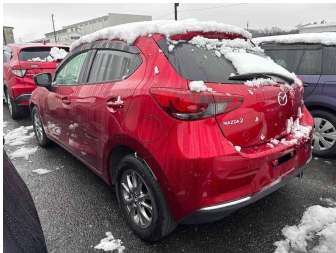


# 2019 Mazda 2 15S Pro active



Purchase Price

Includes GST  
Excludes on-road costs of \$300

POA

Finance may be available on this vehicle. Ask one of our friendly staff for more information.



Gain peace of mind with Mechanical Breakdown Insurance. **Ask us how.**



## Top features

None Listed

Body Style

**Hatchback**

Odometer

**25,600 km**

Engine

**1500 cc**

Fuel Type

**Petrol**

Transmission

**Auto**

Wheels

-

VIN

-

Interior

-

Safety



Based on 2024 UCSR rating for 14-22 models

Reg No.

-

Ext Colour

**Soul Red Crystal**

History

-

Seats

-

CO2 Emissions

★★★★★☆☆

**122 grams/km**

Energy Economy

★★★★☆☆☆☆

**Annual fuel cost of \$2,080**

**5.3L per 100km**

Cost per year is an estimate based on petrol price of \$2.80 per litre and an average distance of 14000 km. Emissions and Energy Economy figures standardised to 3P WLTP.

**Stock ID: 2158**

Contour Cars

Contour Cars | Phone 022 621 2842, GST 109-463-094 | Email  
contourcars@live.com  
769 Fergusson Drive, Upper Hutt 5018, New Zealand  
www.contourcars.co.nz